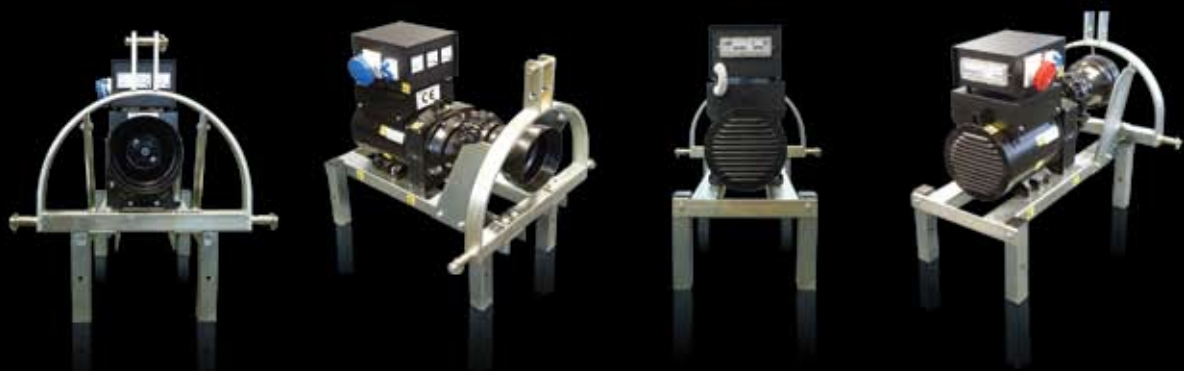




Power Take Off Alternator Units
High performance alternators,
its where our roots are.



For over 60 years **Mecc Alte** has been specializing in one thing and one thing only – producing the **finest, highest quality, most reliable alternators** for use across a multitude of applications. One such application is in the farming community where constant power supply is often critical.



Mecc Alte PTO – Power Take Off Alternator Units

The ETC PTO generator range is a tractor driven power unit which includes an alternator with control box, an overgear, a shaft guard and a frame support. These units are designed to provide reliable back up power solution in the event of a power failure.

Driven by a tractors power take off they are equipped with a sturdy frame which connects by means of a three point linkage. Characterised by proven high performance levels, robust construction with maximum reliability they have an exceptional starting capacity for electric motors ensuring they meet the harshest demands when power is needed most.

As an innovative and dynamic company, Mecc Alte is proud to be the largest independent producer of synchronous alternators, with the widest low voltage alternator selection of any manufacturer. It is this that gives Mecc alte its greatest strength in offering an alternator that is proven and reknown worldwide for its reliability and exceptional performance we can assure peace of mind and a world class product.

It is our proven experience and manufacturing capability, backed by world class after sales support and prestige brand, which makes Mecc Alte the number one partner to fulfil any alternator driven power requirements.



Specification

Alternator Type:	Mecc Alte
Voltage/Phase:	415/230v / 3 phase or 220/110v / 1 phase
Alternator speed/Hz:	1500rpm 50Hz (four pole) or 3000rpm 50hz (two pole)
Duty:	Industrial
Features:	Type Mecc Alte, industrial, self regulating, synchronous, with continuous ratings based on an ambient temperature of 40 Deg C, ratings to Class H rise, and up to 1000 masl, Class H insulation. Internal protection to IP21/23. Regulation +/- 4.0%. Interference suppression to VDE Class N.

Overload Capability

Class leading motor starting capacity with permissible overloads of 400% for 20 seconds, of 50% for 2 minutes. Standby Power rating is also exceptional and machines can offer an additional 10% for 1 hour in every 6 hours of operation.

Control Box

Rear facing providing easy monitoring from tractor the control box protected to IP55 contains either Voltmeter, Ammeter and Frequency meter set or LED indicator for easy use. Fitted with two BS4343 external outlet sockets for simple connection whilst protecting the user from miss-use. In addition a three phase 30m Amp differential switch and a double pole circuit breaker provide protection.

Gearbox

Heavy-duty high quality oil bath gearbox with protective plastic guard.

Frame

A sturdy galvanised, mechanically welded frame with 3-point linkage system. With easy lifting points for simple transportation.

Quality Assurance

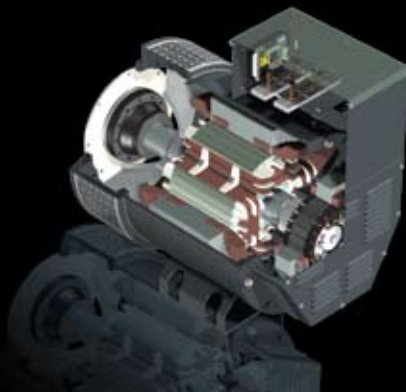
Machines comply with recognised standards CE1 2-3, IEC34-1, EN 60034-1, VDE 0530, and BS 4999. CSA

2 Year Manufacturers Global Warranty

We appreciate that peace of mind is critical and whether you choose the two pole 3000rpm unit or the 1500rpm four pole type the alternator has a fully backed 2 year manufacturers warranty as we are confident in our products capabilities. Extended warranty is available on request.

Additional Options Available

Electrical options such as voltage regulator, anti-condensation heater, speed indicator light, along with mechanical options such as IP23 or IP45 protection are readily available. Other bespoke options to suit all requirements can also be offered.



Excellent motor start capabilities across the range

Simple and reliable control systems for ease of use

Very robust with solid frame design and great impregnation systems

Made using the latest and most advanced manufacturing technology ensuring a cost effective made for manufacturing product design

Voltage regulation +/- 1% with AVR or +/- 5% with transformer control

Compact design with high efficiency minimising size and weight and optimising drive power

